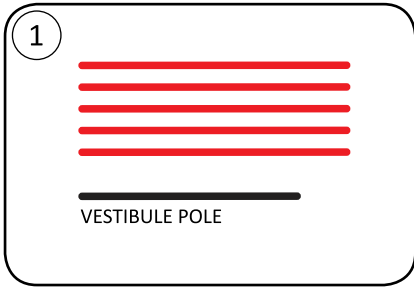
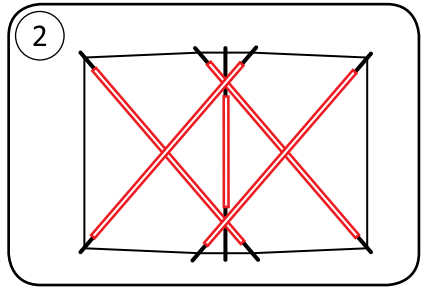


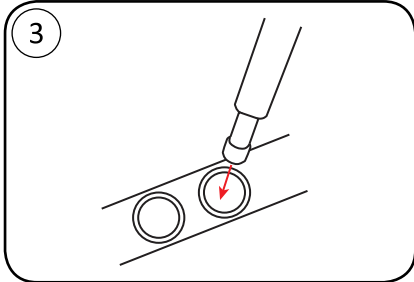
How to set up your Marmot Thor 2P/3P



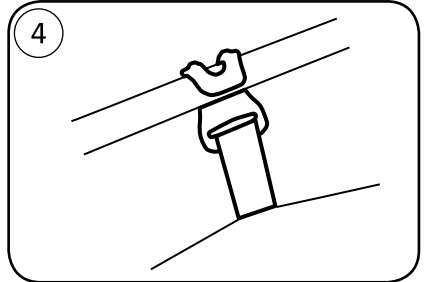
CONNECT POLES LEAVING NO SPACE BETWEEN SECTIONS



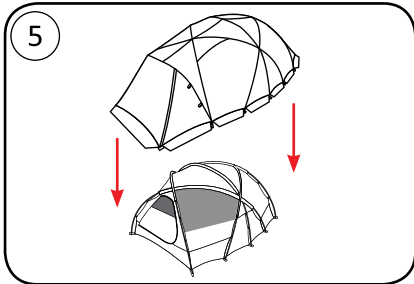
INSERT 5 MAIN POLES THROUGH POLE SLEEVES



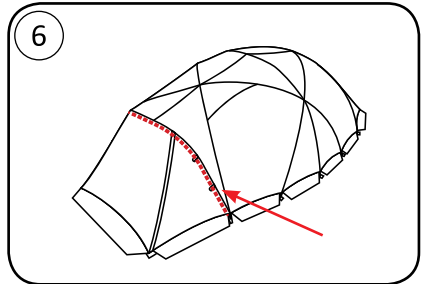
INSERT POLE TIPS INTO CLOSEST GROMMET



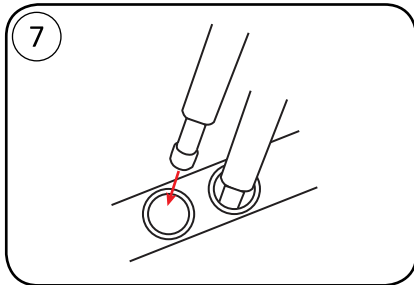
CONNECT CLIPS TO POLES



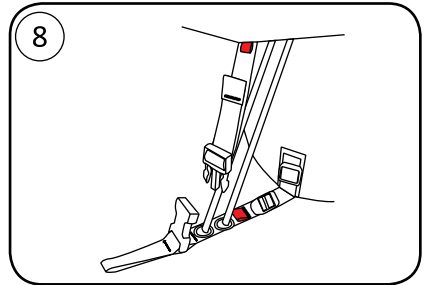
PULL RAINFLY OVER BODY
NOTE RED TABS ON FRONT CORNERS



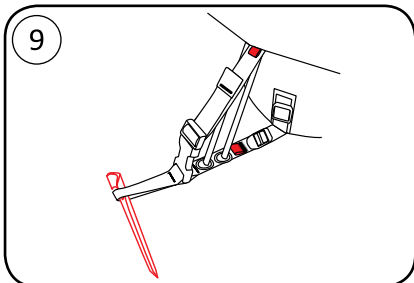
INSERT VESTIBULE POLE INTO SLEEVE
ON UNDERSIDE OF FLY



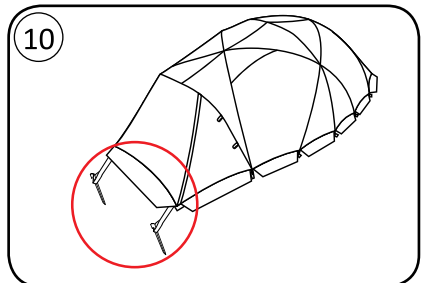
INSERT VESTIBULE POLE TIP INTO
FRONT GROMMET



CONNECT BUCKLES AND PULL TO TIGHTEN

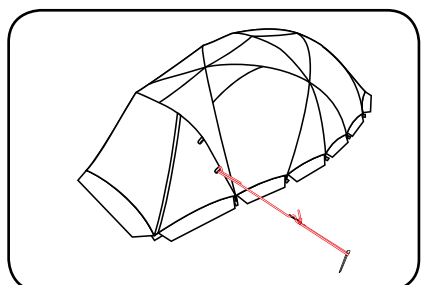
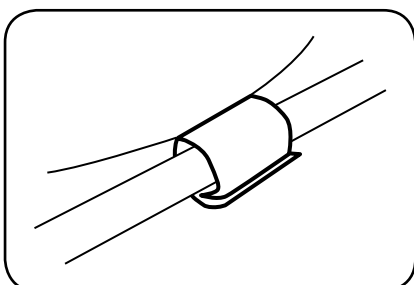


STAKE OUT CORNERS



STAKE OUT VESTIBULES

OPTIONAL



For additional information about your Marmot® tent
please visit www.marmot.com.