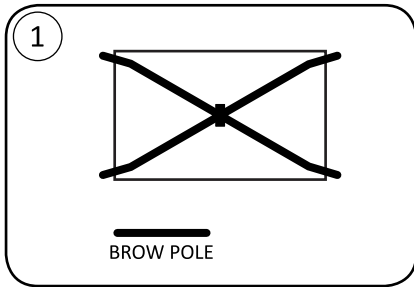
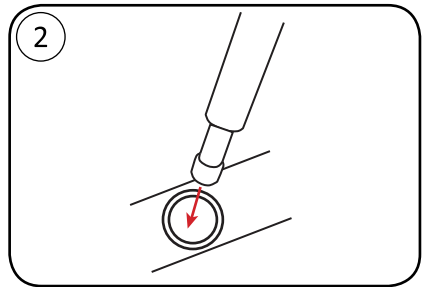


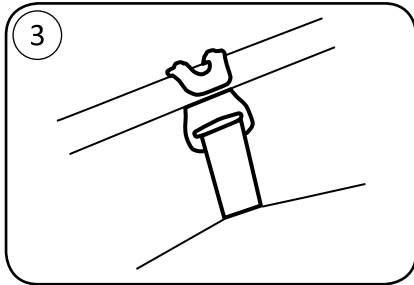
## How to set up your Marmot Tungsten 2P/3P



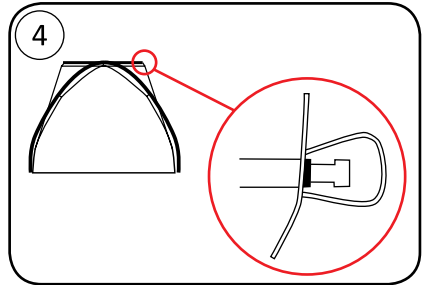
CONNECT POLES LEAVING NO SPACE BETWEEN SECTIONS AND LAY ON TENT BODY



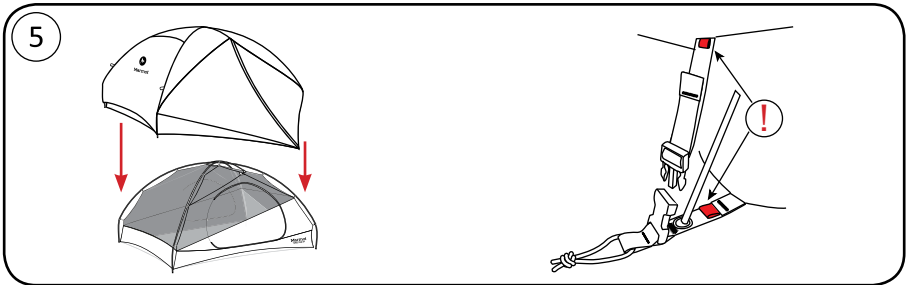
INSERT POLE TIPS INTO CORNER GROMMETS



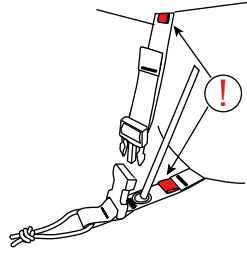
CONNECT CLIPS - MATCH WEBBING COLOR TO POLE COLOR



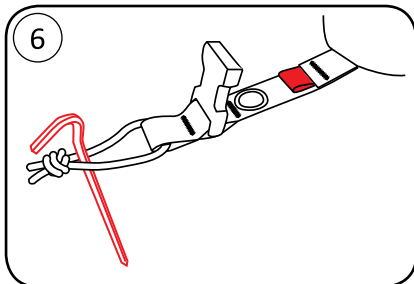
PLACE BROW POLE ON TOP OF "X" POLES AND INSERT INTO GROMMETS



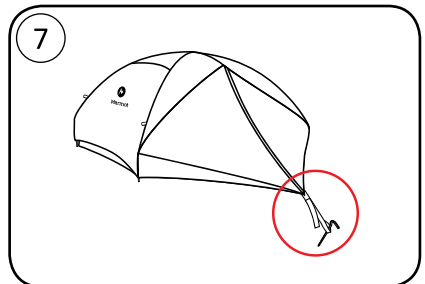
PULL RAINFLY OVER BODY



NOTE RED TABS ON FRONT CORNERS  
CONNECT BUCKLES AND PULL TO TIGHTEN

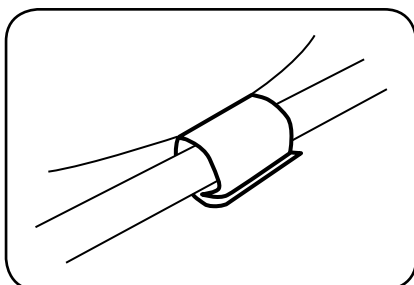


STAKE OUT CORNERS

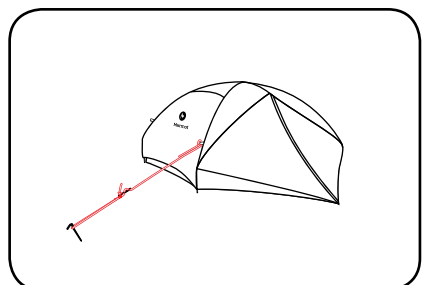


STAKE OUT VESTIBULES

### OPTIONAL



LOOK UNDER FLY - VELCRO FLY TO POLES



GUY OUT IN HIGH WIND

For additional information about your Marmot® tent  
please visit [www.marmot.com](http://www.marmot.com).